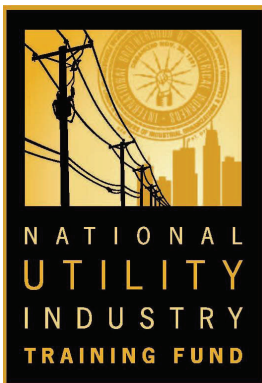


National Utility Industry Training Fund

Midwest Regional Training Center Course Catalog

**Strengthening our workforce today for
tomorrow...**



August 2011

Table of Contents

Summary	Page 3
Technical Training Courses	Page 4
Safety Courses	Page 8
OSHA Courses	Page 10
Enrollment Information	Page 11



About Midwest Regional Training Center

In 2011 the Midwest Regional Training Center, located at 10052 Raytown Road, Kansas City, MO, opened its facility on 10 acres of beautiful, natural treed landscape that serve as a training facility for KCP&L and the NUITF.

This facility is equipped with both classroom and hands-on training in a safe, controlled setting. All courses offered will provide and/or enhance specific job skills for the new or experienced craftsman (utility worker).

About NUITF

The National Utility Industry Training Fund (NUITF) is a partnership between the International Brotherhood of Electrical Workers (IBEW) and a group of forward-thinking utility companies across the United States who believe that more can be accomplished together than separately. Our mission is to provide employees and prospective employees with excellent job skills by providing hands-on experience as well as fundamentals of electrical, mechanical, and construction theory.

About KCP&L

Operating from headquarters in Kansas City, Missouri, KCP&L has evolved into a full-service energy provider and resource. Founded in 1882, KCP&L is recognized as a Midwest leader in fuel procurement, plant technology, and efficient power production and distribution.

KCP&L services more than 800,000 customers in 47 northwestern Missouri and eastern Kansas counties. It has a service territory of approximately 18,000 square miles. Delivering that power requires 3,000 miles of transmission lines, over 24,000 miles of distribution lines and 320 substations.

The Company operates 15 generating stations providing power to our customers and selling into the wholesale market.

www.kcpl.com

Technical Training

AC/DC Fundamentals

80 hours (2 Instructors)

Prerequisite: None

Meals provided: Yes

This course covers the fundamental electrical concepts and skills essential to the utility industry. The principals and theories associated with Alternating Current and Direct Current are established by study and lab exercises dealing with electrical circuits, laws and formulas, and the use of test equipment to analyze AC/DC circuits.

At the completion of this course, the student should be able to describe the properties of electricity, demonstrate proper methods of measuring, identifying, testing and troubleshooting different types of electrical circuits and be able to demonstrate a working knowledge of the basic electrical concepts that pertain to electrical utility work.

Advanced AC/DC

80 hours (2 Instructors)

Prerequisite: AC/DC Fundamentals

Meals provided: Yes

This course covers the advanced electrical concepts and skills essential to the utility industry. The principals cover theory and explore formulas about circuitry. This class session also covers principals of basic trigonometry, vector analysis and problem solving.



Technical Training

Climbing Qualification (Free-Climbing)

40 hours (2 Instructors)

Prerequisite: No

Meals provided: Yes

This class will provide basic climbing skills and overcome obstacles at height of 20' and above. The student will learn about pole-top agility (circling, reaching and basic pole safety).



Buckingham Bucksqueeze

24 hours (1 Instructor/eight students)

Prerequisite: No

Meals provided: Yes

In this three-day course the student will become a qualified climber using the Buckingham *Bucksqueeze*™ device.

Hot Stick Refresher

40 hours (2 Instructors)

Prerequisite: No

Meals provided: Yes

This class covers hot stick safety and techniques. The basic skills consist of shotgun use, tying and untying conductors (3-2 tie & preforms) with different sticks. Safe handling of conductors when positioning or transferring, pole crab and gin stick use, and dead-end bell change out. Advanced skills include connector application (bolt-on, wedge, and fire-on) and many others.



Technical Training

Rubber Gloving Techniques (Cover-up)

24 hours (2 Instructors)

Prerequisite: No
Meals provided: Yes



This course will discuss hands-on applications and safety methods associated with rubber gloving voltages of 15 kV or less. Course design will provide a general knowledge of gloving methods out of an insulated aerial device, and insulated cover techniques of first and second point of contact.

Transformer Connections I

16 hours (2 Instructors)

Prerequisite: None
Meals provided: Yes

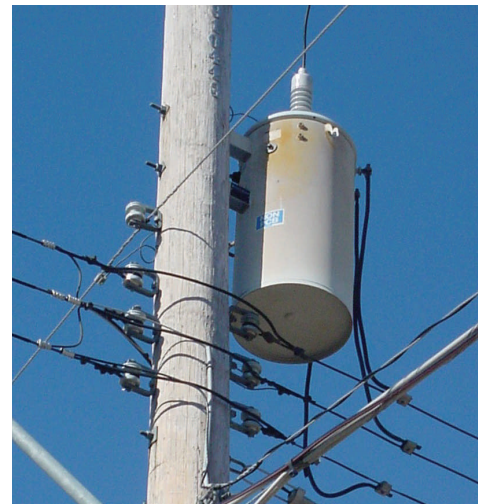
This course introduces the AC transformer, one of the devices critical to the modern electrical distribution system. The student will learn the essential theory and the practical application of key transformer single and three-phase connections. The training is conducted in a setting that grants participants safe, controlled access to real world examples of this crucial technology and the supporting equipment essential to its maintenance.

Transformer Connections II

16 hours (2 Instructors)

Prerequisite: Yes—Transformer Connections I
Meals provided: Yes

This advanced course is for the experienced electrical student. The training focuses on all combinations of single-phase and three-phase transformer connections, with emphasis on load calculations and phasor diagram analysis. The course requires a prerequisite of Transformer Connections I or equivalent experience.



Technical Training

Fundamentals of Electrical Utility Systems

An Overview of Electrical Utilities: Theory to the Light Switch

16 hours (1 Instructor)

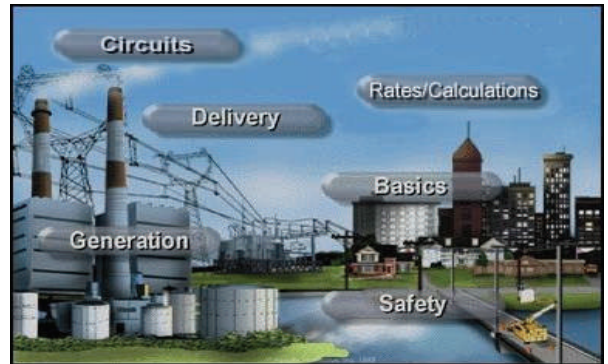
Prerequisite: No

Meals provided: Yes

This course is designed for employees whose work varies from administrative, management, to production and technical functions within electric utility. The intent is to provide a general understanding of basic electrical theory, utility operations, systems, technical terms and processes used in company communications to all employees.

This course will provide an overview of the electrical system from generation to residential. The course will examine the chain of processes that make electricity available when you flip that switch.

No special knowledge is needed to understand the material, only an interest in gaining a basic understanding of the components which make up the whole system of electric energy distribution.



Pre-Employment Boot Camp

6 Weeks (3 Instructors)

Prerequisite: Medical release and liability waiver, job preview, climbing boots

Meals provided: No

This course certifies candidates for entry-level jobs that require pole climbing and construction skills in industries such as electrical, cable and telecom utilities, railroad, and state or local governments.

Successful candidates will: perform pole inspections, safely climb wood poles, dig pole holes and set poles by hand, tie basic knots and splices in line work, identify hand and power tools and their use, identify overhead conductors, prepare a transformer for installation and satisfy all written test requirements for final certification. Certificates are issued upon final completion.



Safety

Hold Procedure

2 hours (1 Instructor)

Prerequisite: No

Meals provided: Yes

This course will cover fundamentals of hold procedure safety, define the need of the holds, identify roles and responsibilities, and hold types. This course meets KCP&L requirements of the hold procedure for contractors.

Personal Protective Equipment (PPE)

2 hours (1 Instructor)

Prerequisite: No

Meals provided: Yes

This course is designed to identify and provide an understanding of the personal protective equipment necessary to protect employees from identified hazards (eyes, face, hands, and feet).

Confined Space Training

2 hours (1 Instructor)

Prerequisite: No

Meals provided: Yes

This course provides fundamentals to confined space training and what constitutes permit and non-permit confined space differences. Atmospheric testing, emergency response requirements, responsibilities and duties of attendants, entrants and supervisors will also be covered.

General Electrical Safety

8 hours (1 Instructor)

Prerequisite: No

Meals provided: Yes

This course is designed to help students understand how electricity is generated and why it is potentially lethal for humans and animals and how we work with it safely. Students will obtain a general knowledge to prevent and eliminate work-related injuries.



Safety

Personal Protective Grounding

8 hours (1 Instructor)

Prerequisite: No

Meals provided: Yes

This course provides safe work techniques used in isolating and grounding conductors and equipment. These techniques include barricading, bracket, and Equipotential grounding in electrical distribution construction.



Crane Operator Certification

Partnership with Crane Institute of America, Inc.

40 hours (2 Instructor/12 students)

Prerequisite: No

Meals provided: Yes

In August 2009, OSHA released a new final rule regarding training for crane operators. As part of that rule, those who operate boom trucks capable of lifting more than 2,000 pounds are required to be certified as Operators. This will include all who operate boom trucks at electric utilities subject to OSHA safety standards.

The NUIF recently certified a number of instructors to conduct training classes to prepare experienced boom truck operators (which include many linemen) for the Written & Practical Exams. Our instructors will deliver curriculum offered by the Crane Institute of America, an OSHA-approved training program, on equipment rated up to and including 75 Ton.

This course will include training materials, and written and practical tests, which are required for full certification. Those who successfully complete the training and testing will receive a 5-year fully portable Operator certification from CIC.



OSHA

10-Hour OSHA Electrical Transmission & Distribution (ETD) Course (Utility Specific)

10 hours

Prerequisite: None

Meals provided: Yes

This course covers workplace hazards from a transmission and distribution perspective. This OSHA accredited course is conducted by an OSHA-authorized instructor with years of experience in the installation and maintenance of transmission and distribution systems. Participants will receive an OSHA card with the partnership stamp upon satisfactory completion.

LV NFPA 70E 8-Hour Qualified Workplace Safety

8 hours

Prerequisite: None

Meals provided: Yes

This course is designed to provide essential NFPA training to Low Voltage qualified workers. It meets criteria for Electric Shock & Arc Flash Safety that satisfies governmental Regulation. The student will learn safe work practices, how to protect against electric shock and arc flash, PPE requirements, permits, and creating electrically safe work conditions.

High Voltage OSHA 1910.269 8-Hour Course

8 hours

Prerequisite: None

Meals provided: Yes

This course covers the high voltage (600v and above) safe work practices and PPE requirements essential to the utility industry and line worker safety.



Enrollment Information



Thank you for considering NUITF as your training resource for excellence in technical and safety training. The Midwest Regional Training Center will host courses on a first-come, first-serve basis and classes are 8 am—4 pm unless otherwise noted. Course content may be customized to meet your business and technical training needs.

Enrollment information will be provided with the course flyer prior to each class. The flyer will outline course summary, price, provisions needed, class location and directions. NUITF accepts check, Visa, MasterCard and American Express.

No Shows and Cancellations

As trainer commitment is preset, student no-shows or cancellations received less than two-days prior to the start of training is non-refundable.

Enrollment and cancellations may be made by contacting:

Alexa Nunnery, Administrative Analyst

816-245-3969 or via email: alexa.nunnery@kcpl.com



National Utility Industry Training Fund (NUIITF)

Greg Beel
Manager, Field Training
NUIITF c/o KCP&L
4400 E Front Street
Kansas City, MO 64120

Phone: 816-245-4035
Fax: 816-245-4008
E-mail: greg.beel@kcpl.com

Danielle Browning
Consultant, Field Training
NUIITF c/o KCP&L
16215 W 108th Street
Lenexa, KS 66219

Phone: 913-894-3038
Fax: 913-894-3086
E-mail: danielle.browning@kcpl.com